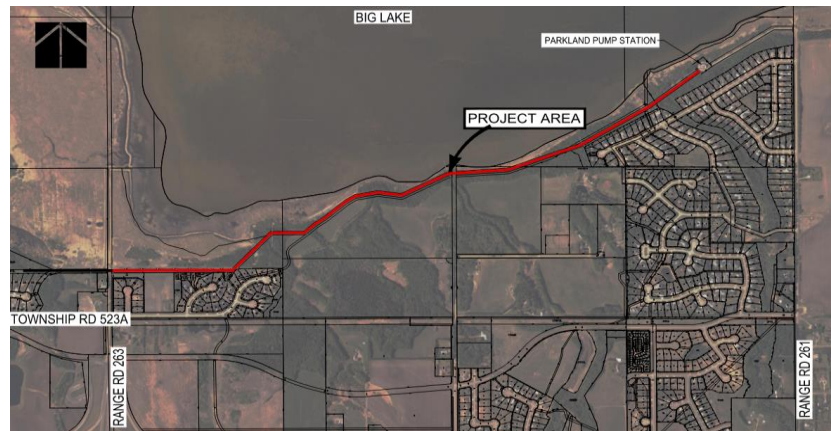


Parkland Gravity Sewer Rehabilitation

PROJECT DETAILS

The Alberta Capital Region Wastewater Commission (ACRWC) is rehabilitating the existing wastewater transmission sewer in its right-of-way located between the north end of Highway 60/Range Road 263 and our Parkland Pump Station.



Why is this project important?

The existing sewer is over 38 years old and will soon reach its expected service life. The ACRWC is proactively rehabilitating this 3 km section of the sewer, to extend its operational life so that it can continue to safely convey wastewater for treatment.

PROJECT TIMELINES

The project is currently in the design phase. The selected method of rehabilitation will be a trenchless method to minimize the construction footprint. Final design is anticipated to be complete in spring of 2023, with construction expected to begin in late summer 2023. Construction will continue for approximately 8 months, primarily occurring during the winter months. Completion is scheduled for spring 2024.

This project is part of an overall strategy to rehabilitate our sewer between Highway 44 and our Parkland Pump Station. A future phase is planned upstream, west of Highway 60.

WHAT TO EXPECT

Workspace

The construction working area is expected to be generally contained within the 20m width of the ACRWC's right-of-way. In some locations, additional temporary



workspace from adjacent landowners may be required, depending on the contractor's methodology.

Environmental Protection

A detailed Environmental Protection Plan (EPP) was prepared during the planning phase of this project. The EPP identifies applicable legislation and regulatory requirements that apply to the project and provides suitable site-specific mitigation measures to be incorporated into construction planning.

As an environmental leader, the ACRWC is committed to following all applicable legislation and regulatory requirements. We are ISO 14001 certified for Environmental Management and we also hold this same high standard for contractors working on our behalf.

Trail Access

During the sewer rehabilitation, some informal trails located along and adjacent to the ACRWC's right-of-way will be temporarily closed to public access to maintain a safe environment for both the public and contractors. Signage will be placed at existing access points to notify the public of closures.

Hours of Work and Noise

Residents can expect increased construction traffic in the area. It is not expected that the work will create excessive noise. Our team will comply with the Parkland County Community Standards bylaw for noise. If it is necessary to exceed allowable noise levels on a temporary basis, prior approval and permits will be obtained from the County.

Safety

Work areas will be kept safe and secure and work will be conducted in accordance with Parkland County bylaws, Alberta Occupational Health and Safety Requirements, and the ACRWC's safety policies.

WHO IS THE ALBERTA CAPITAL REGION WASTEWATER COMMISSION?

Established in 1985, the ACRWC is a not-for-profit commission operating under the Municipal Government Act that provides wastewater transmission and treatment services to approximately 330,000 residents in 13 municipalities within the Edmonton Area.

FOR MORE INFORMATION

Please contact us at: info@acrwc.ab.ca or 780-467-8655